

**PLACER: Application Evaluation / Budgetary Proposal / Sample Test Report**

*Save this form to a location on your computer. Fill out the highlighted areas. You can advance to the next field using your "Tab" key.  
Save the form and email it or print it using the buttons at upper right.*

**INSTALLATION QUOTE: (Reseller/End User Experience) Check One!**

Quote Installation and Training

Not Yet

No need to quote (Duplication of previous order)

**DATE:**

**RESELLER INFORMATION:**

Company:		Contact:	
Address:		Title:	
		Telephone:	
		Email:	
Mailing	Packaging	OEM	Integrator
Other (Describe)			

**END-USER INFORMATION:**

Company:		Contact:		
Address:		Title:		
		Telephone:		
		Email:		
Contact's Role:	Research	Influence	Recommend	Final Decision

**PLACER: Application Evaluation / Budgetary Proposal / Sample Test Report**

**BUDGETARY RANGE (required):**

**HAS CUSTOMER PROVIDED A SPECIFICATION DOCUMENT?**

Yes (If yes, please forward)      No

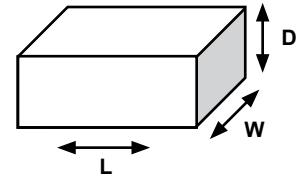
**ESTIMATED DATE OF PURCHASE:**

0-3 Months                      4-6 Months                      7-12 Months                      13-18 Months                      TBD

*FOR THIELE USE ONLY*  
**SALESPERSON (Internal & External):**  
**TERRITORY:**  
**OPPORTUNITY NAME:**

**PRODUCT INFORMATION:**

Product Description	Length	Width	Depth



**EXPECTED PLACEMENTS PER MINUTE:**

**ENVIRONMENT:**

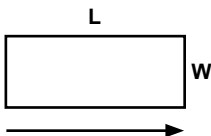
Room temperature (heated and air conditioned)      Room Temperature (heated only)      Refrigerated to      Degrees

**PLACEMENT TYPE:**

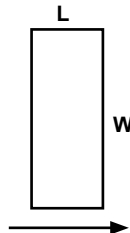
Horizontal                      Vertical

**TRAVEL DIRECTION OF PRODUCT ON CONVEYOR:**

Short edge leading



Long edge leading



Not applicable (square or round)

Best Way

**PLACER: Application Evaluation / Budgetary Proposal / Sample Test Report**

**DESCRIPTION OF APPLICATION:**

**SPECIAL REQUIREMENTS FOR PRODUCT ORIENTATION AFTER PLACEMENT?**

(For example: open side up/down, test side up/down, ect.) Explain:

**PLACEMENT ACCURACY REQUIRED? Explain:**

**GLUE SYSTEM PROVIDED BY:**

Thiele                      Other                      Not Required

**GLUE SYSTEM TYPE:**

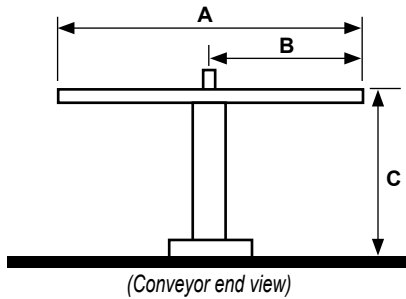
Hot melt gun                      Cold glue

**PLACER: Application Evaluation / Budgetary Proposal / Sample Test Report**

**CUSTOMER CONVEYOR / MACHINE INFORMATION:**

- A. **Motion type?** Continuous motion or Intermittent motion  
 B. **Lanes of product?** Single lane or Multiple lanes Number of lanes:  
 C. **Belt type?** Flat Belt Conveyor or Flighted conveyor Flight pitch dimension:

Conveyor dimensions:



A (conveyor width):

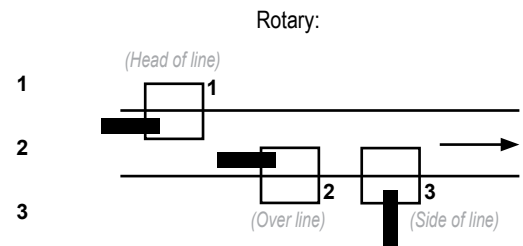
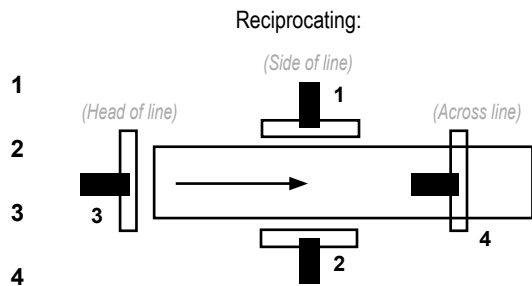
B (lug position):

C (conveyor height):

Placement height:

**NUMBER OF PLACERS:**

**PLACER POSITION:**



Stand

No stand

Deck Mount

**TRIGGER TYPE (choose one):**

**Single Shot**

- Photo Eye Proximity Switch Customer Supplied Limit Switch

OR

**Continuous**

Continuous placement using a timer relay for reciprocating placers or a AC motor with VFD for rotary placers

OR

**Synchronized to conveyor or host infeed**

- Thiele to provide encoder for host infeed Host to provide encoder stream to Thiele machine

**PLACER: Application Evaluation / Budgetary Proposal / Sample Test Report**

**INTERACTION WITH A HOST MACHINE (check all that apply):**

- None
- Placer to run only with an ENABLE SIGNAL from host
- Thiele to provide switch to monitor for "Arm Up"
- "HAND SHAKE" host to signal, placer to supply cycle complete signal (PLC machines only)

**PREFERRED ELECTRICAL SERVICE:**

- |                       |                       |                       |                       |
|-----------------------|-----------------------|-----------------------|-----------------------|
| 115V / 1 phase / 60Hz | 230V / 1 phase / 60Hz | 230V / 3 phase / 60Hz | 460V / 3 phase / 60Hz |
| Other                 | Voltage:              | Phase:                | Hz:                   |

**DRIVE:**

- |              |            |       |
|--------------|------------|-------|
| Air cylinder | Jack shaft | Servo |
|--------------|------------|-------|

**CONTROLS:**

- |                 |          |        |     |
|-----------------|----------|--------|-----|
| 24 VDC standard |          |        |     |
| Other           | Voltage: | Phase: | Hz: |

**CONSTRUCTION:**

- |                                       |   |   |
|---------------------------------------|---|---|
| Standard<br>(some painted mild steel) | Water wash-down NEMA 4<br>(plastic, stainless steel, anodized aluminum) | Caustic wash-down NEMA 4X<br>(plastic and stainless steel only) |
|---------------------------------------|---|---|

**COMPRESSED AIR AVAILABLE:**

- |                |      |
|----------------|------|
| Line Pressure: | CFM: |
|----------------|------|

**VACUUM SYSTEM:**

- |              |         |                     |
|--------------|---------|---------------------|
| Motor driven | Venturi | Customer to provide |
|--------------|---------|---------------------|

**OPTIONS TO INCLUDE:**

- |             |             |        |                            |
|-------------|-------------|--------|----------------------------|
| Missed item | Low product | Caster | UL Listed electrical panel |
|-------------|-------------|--------|----------------------------|

**OPTIONS FOR UPSSELL:**

- |             |             |        |                            |
|-------------|-------------|--------|----------------------------|
| Missed item | Low product | Caster | UL Listed electrical panel |
|-------------|-------------|--------|----------------------------|